

JOINT WASTE DISPOSAL BOARD

NOTICE OF MEETING

19 MARCH 2008

TO: ALL MEMBERS OF THE JOINT WASTE DISPOSAL BOARD

You are invited to attend a meeting of the Joint Waste Disposal Board on **19 March 2008 at 6.00 pm** in the Function Room, Fifth Floor, Easthampstead House, Town Square, Bracknell. An agenda for the meeting is set out overleaf.

Mark Moon
Project Director

Members of the Joint Waste Disposal Board

Bracknell Forest Borough Council:

Councillor Mrs M Ballin
Councillor Mrs D Hayes

Reading Borough Council:

Councillor Mrs B Tickner
Councillor S Waite

Wokingham District Council:

Councillor R Stanton
Councillor S Weeks

EMERGENCY EVACUATION INSTRUCTIONS

If you hear the alarm:

- 1 Leave the building immediately**
- 2 Follow the green signs**
- 3 Use the stairs not the lifts**
- 4 Do not re-enter the building until told to do so**

Contact: Derek Morgan
Telephone (01344) 352044
E-mail: derek.morgan@bracknell-forest.gov.uk



JOINT WASTE DISPOSAL BOARD
19 March 2008 (6.00 pm)
Function Room, Fifth Floor, Easthampstead House, Town Square, Bracknell.

AGENDA

	Page No
1. APOLOGIES FOR ABSENCE	
2. DECLARATIONS OF INTEREST	
Members are required to declare any personal or prejudicial interests and the nature of that interest, in respect of any matter to be considered at this meeting.	
3. MINUTES OF THE MEETING OF THE JOINT WASTE DISPOSAL BOARD - 12 DECEMBER 2007	1 - 12
To receive the minutes of the Joint Waste Disposal Board held on 12 December 2007.	
4. URGENT ITEMS OF BUSINESS	
To notify the Board of any items authorised by the Chairman on the grounds of urgency.	
5. PRESENTATION BY PROJECT DIRECTOR (Project Director)	
6. PROGRESS REPORT AND FINANCIAL UPDATE (Project Director)	13 - 16
7. EPC PLANNING AND LICENSING REPORT (Project Director)	17 - 18
8. DRAFT WASTE STRATEGY AND ACTION PLAN (Project Director)	19 - 64
9. SCHEDULE OF MEETINGS (Director of Corporate Services)	65 - 66

Agenda Item 3

**JOINT WASTE DISPOSAL BOARD
12 DECEMBER 2007
(6.00pm - 7.35pm)**

Present: Bracknell Forest Borough Council
Councillors Mrs Ballin and Mrs Hayes

Present: Reading Borough Council
Councillor Waite

Present: Wokingham Borough Council
Councillors Stanton (Chairman) and Weeks

Apologies for absence were received from:
Councillor Mrs Tickner

9. Declarations of Interest

There were no declarations of interest.

10. Minutes of the Annual Meeting of the Joint Waste Disposal Board - 5 September 2007

The minutes of the meeting of the Joint Waste Disposal Board held on 5 September 2007 were accepted by the Board and signed by the Chairman.

11. Urgent Items of Business

There were no urgent items.

12. Project Presentation

Andrew Woolcock, WRG, attended the meeting to update the Board on the project and the presentation is attached to these minutes for information.

In particular it was highlighted to the Board:

- (i) it was hoped that Phase 2 of Smallmead which included construction of a Materials Recovery Facility and Office/Visitor Centre would be complete by December 2008;
- (ii) Lakeside Energy from Waste could expect a full throughput by late summer 2008;
- (ii) works would commence at Longshot Lane in April 2008 and it was hoped that Phase 1, construction of the waste transfer site and office, would be complete by September 2008 with the whole construction aiming to finish within 15 months; and
- (iv) there was a clear communication plan for the construction period of Longshot Lane to keep the public informed of the progress, and a waste flow summary would document performance at each stage to report to partners.

13. Arrangements for Civic Amenity Provision at Longshot Lane, Bracknell, during the Construction Phase

Mark Moon advised the Board of the proposals for the arrangements around the temporary opening of the Civic Amenity site at Longshot Lane during the 15 month

period of construction of new facilities. In the extraordinary event that there were construction difficulties making the site inaccessible, the media would be made aware as soon as possible and alternative arrangements would be found.

RESOLVED that

- (a) the site be opened from 5pm to 8pm on every week day for the reception of civic amenity waste; and
- (b) the expenditure of £88,000 be approved to fund the above proposals from the budget which is funded for remedial work to the buildings at Longshot Lane, which are not now required.

14. **Appointment of Project Director**

The Board received the report requesting confirmation of the appointment of the Corporate Head of Environment at Wokingham Borough Council as Project Director for Re3 with effect from 1 October 2007.

RESOLVED that the Corporate Head of Environment at Wokingham Borough Council be appointed as Project Director for Re3, subject to the appropriate ratification process of each authority.

15. **Civic Opening of Phase 1, Smallmead**

The Board was updated on the progress of Phase 1 of the building at Smallmead which had been completed 2 months ahead of schedule. It was proposed to hold a Civic Opening of Phase 1 on 8 January 2008, with the public being able to access the site from 14 January 2008.

RESOLVED that it be noted that the construction of Phase 1 of Smallmead was anticipated to have been completed by 8 January 2008 and that a Civic Opening should be arranged for that date.

16. **Engineering Procurement Construction (EPC), Planning and Licensing Report**

The Project Director updated the Board on the progress of the Engineering Procurement Construction Contract and Planning since the last meeting of the Board on 5 September 2007.

- (i) negotiations with Re3 were underway regarding to the application for a new Waste Management Licence at Smallmead; and
- (ii) the communications plan submitted as part of the application for Longshot Lane was also being considered by Re3.

RESOLVED that progress made in the areas of the Engineering Procurement Construction (EPC) Contract and Planning since the last meeting on 5 September 2007 be noted.

17. **Project Update**

The Board considered a report which provided an update on project activities since the last meeting on 5 September 2007. The Project Director highlighted the following issues:

- (i) in respect of Bring Bank sites the service had improved;

- (ii) the projection of full year spend had fallen by over £200,000; and
- (iii) the Councils were currently on target to meet their 2007/08 Landfill Allowance Trading Scheme (LATs) allocations, and also hold surpluses from previous years. However the LATs performance needed monitoring to ensure that the benefits of the contract were realised.

RESOLVED that progress since the last meeting on 5 September 2007 be noted.

18. **Waste Strategy**

The Board received and noted the timetable for the Re3 Joint Municipal Waste Management Strategy. An update on the Strategy would be brought to the next meeting of the Board.

CHAIRMAN

This page is intentionally left blank



the re3 project: zeroing in on waste

A Partnership

the re³ project: zeroing in on waste

WHY ?

the re³ project: zeroing in on waste

- Environmental
- Sustainable
- Financial
- Legislation / Targets

the re³ project: zeroing in on waste

WHAT ?

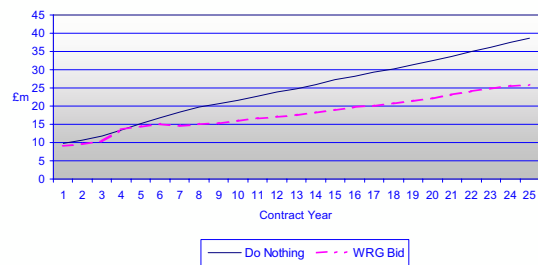
the re3 project: zeroing in on waste

- 25 Year Solution
- New Facilities
- Contract for Energy from Waste – 60 000 tpa
- Contract for Landfill – residual waste
- Finance

the re3 project: zeroing in on waste

- Significant Targets / Education
 - ❖ recycling & composting from 28% to 40% by 2010
 - ❖ to 46% by 2015
 - ❖ to 50% by end of contract
- Other Services
 - ❖ extension to bring bank collections
 - ❖ Haulage services
 - ❖ Waste electrical and electronic goods

Bid v Do Nothing



The FCC Group A world leading services and construction group

- Diversified construction and services group
- Turnkey solutions provider
- First class technology portfolio and track record
- MBT, recycling, composting, EfW solutions



FCC in the UK : Waste Recycling Group

- Strong municipal relationships with 60 local authorities
- Growing portfolio of PFI/PPP contracts
- EFW – 650,000 tpa, more capacity consented
- Diversion from landfill creates many opportunities for alternative treatments (EFW, MBT, recycling)



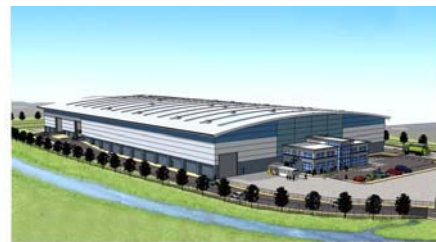
the re3 project: zeroing in on waste

– Delivery So Far:

- ❖ Managed Changeover – December 2006
- ❖ Existing Sites at Smallmead and Longshot Lane
- ❖ Provision of Disposal and Composting
- ❖ Implementation of Waste Minimisation
- ❖ Bring Banks
- ❖ 2007 contract tonnage expected 220,000 tonnes

the re3 project: zeroing in on waste
– Works Delivery Programme:

Activity	2006		2007		2008		2009	2010	2011	2012
	Q1-2	Q3-4	Q1-2	Q3-4	Q1-2	Q3-4				
CONTRACT CLOSE										
Contract Close	12/06									
Contract Close	12/06									
NECESSARY CONSENTS										
Planning Application Submission (All Projects & Early Consents)	12/06									
Site Specific Planning Application Received (All Projects)	12/06									
Site Specific Planning Application Planning Approval Date	12/06									
Site Specific Planning Approval Received (All Projects)	12/06									
Site Specific Planning Approval Received (All Projects)	12/06									
SMALLMEAD WORKS DELIVERY PLAN										
Planning Application Submission (All Projects, UK & Foreign)	12/06									
Site Specific Planning Application Received (All Projects)	12/06									
Site Specific Planning Application Planning Approval Date	12/06									
Site Specific Planning Approval Received (All Projects)	12/06									
Site Specific Planning Approval Received (All Projects)	12/06									
LONGSHOT WORKS DELIVERY PLAN										
Planning Application Submission (All Projects, UK & Foreign)										
Site Specific Planning Application Received (All Projects)										
Site Specific Planning Application Planning Approval Date										
Site Specific Planning Approval Received (All Projects)										
Site Specific Planning Approval Received (All Projects)										
FIXED WORKS CONSIDER DATES										
Fixed Works Completion										
LARGE-SCALE EPC PLANT										
Procurement Completion (All Projects)										
Construction Completion (All Projects)										
Commissioning Completion (All Projects)										



Smallmead Waste Management Park

the re3 project: zeroing in on waste

– Smallmead Works:

- ❖ Phase 1 HWRC and Transfer Station – early January 2008
- ❖ Phase 2 MRF and Office / Visitor Centre – Dec 2008

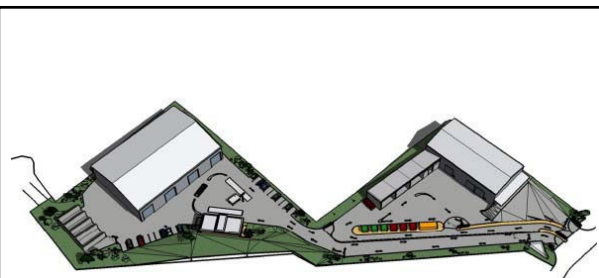


Lakeside EfW – due for commissioning mid 2008

the re3 project: zeroing in on waste

– Lakeside Energy from Waste:

- ❖ Contracted to provide 60,000 tpa of incineration capacity
- ❖ To export some 550+ kWh/t of electricity
- ❖ Approximately 2 to 3 months behind original schedule
- ❖ Waste deliveries likely to commence in June 2008
- ❖ Full throughput expected late summer 2008



Longshot Lane Waste Management Park

the re3 project: zeroing in on waste

– Longshot Lane Works:

- ❖ April 2008 – September 2008 Phase 1: WTS & Office / Visitor Centre
- ❖ October 2008 - June 2009 Phase 2: HWRC & Roadways

Service levels during construction

- Phase 1: April 2008 – September 2008

- ❖ The local authorities have asked re3 Ltd to review extension of service beyond agreed hours
- ❖ re3 Ltd proposal to open CA site between 5 & 8pm every week day; revised site layout to enable this.
- ❖ However, no weekday evening service during the site set up period. 6 trucks to be stabled at the Downmill Lorry park for the duration of works.

Service levels during construction

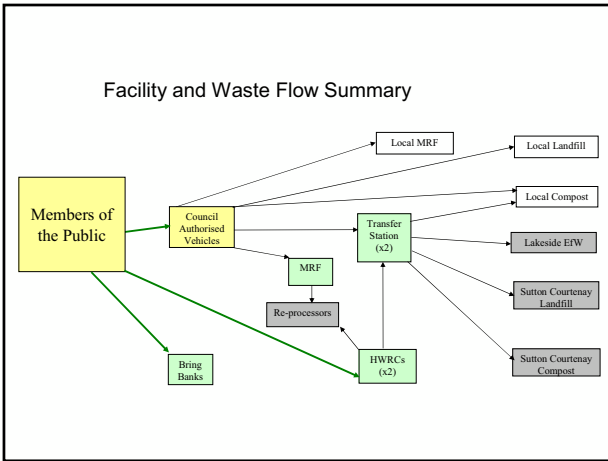
- Phase 2: October 2008 – June 2009
 - ❖ As phase 1: Open CA site between 5pm to 8pm every week day except during site set up and roadway works.
- Benefits:
 - ❖ The public have the opportunity to use their facility during the week so there is some continuity of service

Communication Plan for construction period

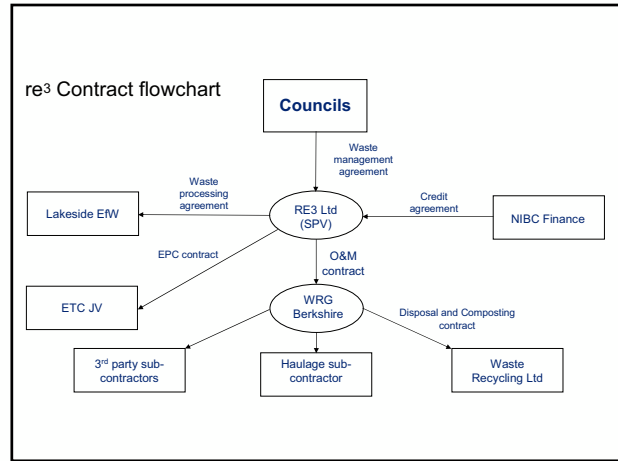
- **Key Messages**

Several key messages are identified for communications:
- ❖ Why was re3 created and what is the partnership designed to deliver?
- ❖ Arrangements and alternatives while disruption continues
- ❖ What are the key stages of redevelopment?
- ❖ What does the redevelopment mean in the long term for site users?

Facility and Waste Flow Summary



re3 Contract flowchart

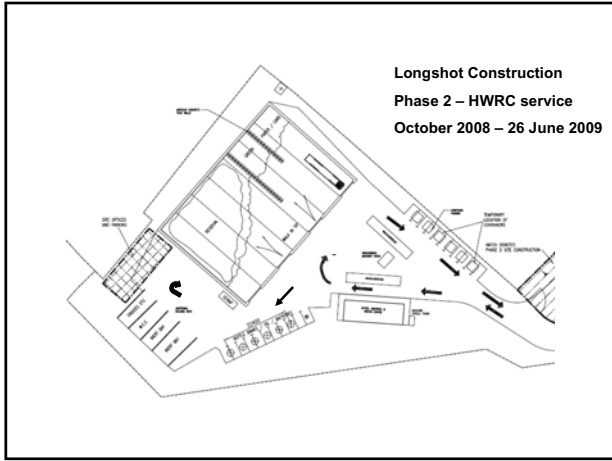
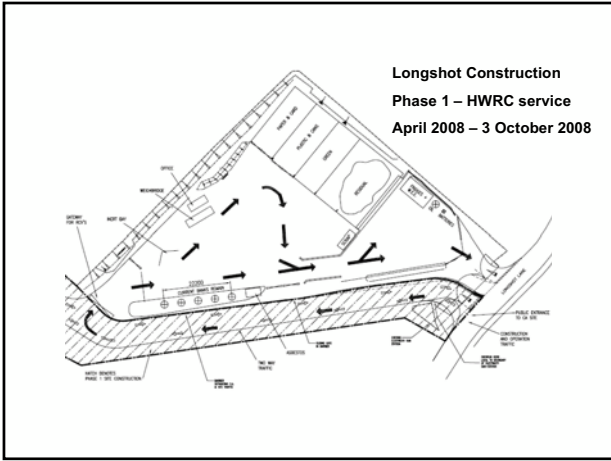


Questions and Answers

This section is currently blank, intended for questions and answers.

Construction progress: Smallmead





This page is intentionally left blank

**TO: JOINT WASTE DISPOSAL BOARD
19 MARCH 2008**

**JOINT WASTE DISPOSAL BOARD - PROJECT UPDATE
(Report by the Project Director)**

1. INTRODUCTION

- 1.1 The purpose of this report is to inform the Joint Waste Disposal Board of progress since the last meeting of the Board on 12 December 2007.

2. RECOMMENDATION

- 2.1 **To note progress made since the last meeting on 12 December 2007.**

3. SUPPORTING INFORMATION

Background

- 3.1 The Joint Waste PFI Contract was signed with WRG on 31 October 2006. After a short mobilisation period, the service commenced on 4 December 2006, when WRG took on the management of the two Key Project Facilities in Bracknell and Reading.

Operations

- 3.2 The new Household Waste Recycling Centre (HWRC) at Island Road in Reading opened on January 11th 2008.
- 3.3 The HWRC opened a day later than was planned due to a handful of issues that arose from the final certification process.
- 3.4 The issues were such that the councils Independent Certifier was not prepared to certify the site for handover on the date of the inspection (Thursday 3rd January 2008).
- 3.5 The main issue related to the construction of an expansion joint in the concrete floor of the Transfer Station. The joint was exposed and correctional work undertaken such that the Independent Certifier was prepared to certify the building for handover at a subsequent inspection (Wednesday 9th January 2008).
- 3.6 Following the handover, the HWRC facility was made available to residents more than 2 months ahead of the contractual schedule.
- 3.7 Construction of Phase 2 at Smallmead is moving on at pace with the majority of the Material Reclamation Facility (MRF) building now in place.
- 3.8 Construction is due to commence at Longshot Lane on March 31st 2008. The site will be completely closed for a week from that date but will re-open on 7th April.
- 3.9 From 7th April onwards, the site will operate under new opening hours for the duration of the construction.

- 3.10 The hours will be as follows: 17:00-20:00 Monday to Friday, 08:00-20:00 at weekends.
- 3.11 During the construction period the site will have to close, on occasion at very short notice to enable the construction work to remain on target.
- 3.12 As an example, if the contractor experiences an unexpected delay whilst pouring concrete, it may significantly reduce the quality of construction finish for them to stop their work at the agreed time and open the CA Site. In such a scenario, the contractor will give the councils as much notice as possible to alert patrons. The councils project team has requested that the contractor propose a minimum notice period.
- 3.13 There will be a freephone number which has a recorded message giving the latest information on the site, including details of any closures. This number will be publicised and residents will be urged to call before making their journey.

Financial

- 3.14 Budget monitoring reports giving detail of the projected outturn for the year continue to be produced and are circulated to the relevant officers within the councils on a monthly basis. This arrangement is proving successful.
- 3.15 The projected overspend has decreased by over £180,000 since the last Board meeting. This is largely due to lower tonnages than were forecast in the third quarter, landfill tonnages being significantly low.
- 3.16 The latest projection for 2007/08 indicates a total overspend of just £16,437. A breakdown is attached.
- 3.17 The Council Project Team met with WRG to revise expected waste flows for 2008/09 to take account of factors such as seasonality and the construction programme. These waste flows will be reviewed on a quarterly basis.
- 3.18 The early completion of Smallmead HWRC in January saw a step up in the baseline fee to the Contractor, which was not expected this financial year. However, the potential impact of this increased payment has been offset against the lower tonnages experienced in the third quarter.

BACKGROUND PAPERS

Reports to Joint Waste Disposal Board, 12 December 2007

CONTACTS FOR FURTHER INFORMATION

Mark Moon, Project Director
0118 974 6308
Mark.moon@wokingham.gov.uk

Oliver Burt, Project Manager
0118 9399990
oliver.burt@reading.gov.uk

	Actual spend April - December 2007	Projection Full Year 2007/8
	£ 1,252,490	
	£ 1,385,460	
	£ 1,323,509	
	£ 1,289,588	
	£ 1,300,219	
	£ 1,202,933	
	£ 1,260,074	
	£ 1,183,431	
	£ 1,055,827	
	<u>£ 11,253,531</u>	<u>£ 15,165,437</u>
Less Reading non-contract waste	-£ 355,500	-£ 474,000
	<u>£ 10,898,031</u>	<u>£ 14,691,437</u>
Financial Model Estimate	£ 11,006,250	£ 14,675,000
Variance	<u>-£ 108,219</u>	<u>£ 16,437</u>
WEEE costs April to June (part funded by grant)	£ 94,833	£ 94,833
Waste composition survey	£ 15,000	£ 15,000
Inflation at 3.6% (2.5% assumed)	£ 105,000	£ 140,000
Other net costs/savings(-)	-£ 323,052	-£ 233,396
	<u>-£ 108,219</u>	<u>£ 16,437</u>

This page is intentionally left blank

**TO: JOINT WASTE DISPOSAL BOARD
19 MARCH 2008**

EPC, PLANNING AND LICENSING REPORT (Report by the Project Director)

1. INTRODUCTION

- 1.1 The purpose of this report is to inform the Joint Waste Disposal Board of progress since the last meeting of the Board on 12 December 2007.

2. RECOMMENDATIONS

- 2.1 **That Members note progress made in the areas of the EPC Contract and Planning since the last meeting on 12 December 2007.**

3. SUPPORTING INFORMATION

Background

- 3.1 The Joint Waste PFI Contract was signed with WRG on 31 October 2006. After a short mobilisation period, the service commenced on 4 December 2006.
- 3.2 The Monthly EPC Progress Report for the period up to the end of February is appended to this report for information.

EPC and Planning

EPC

- 3.3 The EPC Contract, for the design and construction of the Key Project Facilities, is being undertaken via a joint venture (JV) between Earthtech and Clugston.
- 3.4 On January 11th 2008 the first Phase of the Smallmead Waste Management Park (the Household Waste Recycling Centre (HWRC)) was opened to the public.
- 3.5 Phase 2 at Smallmead is well underway and in fact the buildings (Material Reclamation Facility (MRF) building and office/visitor centre) are expected to be completed by mid-August. The remaining work on this phase will be in the construction and testing of the MRF itself and in landscaping.
- 3.6 The MRF will be built on site and OKLM, the manufacturers, are due to arrive on site in early April.
- 3.7 Phase 2 at
- 3.8 Work at Longshot Lane is due to begin on April 7th. Prior to this date, the site will be closed completely to allow the site to be completely cleared in readiness for the existing buildings to be demolished.
- 3.9 Work at Longshot Lane is also due to be completed in two phases. The first phase (Transfer Station) should finish around the end of 2008 with the second phase

(HWRC) finishing in June 2009. Works at Longshot Lane are scheduled to last for 15 months.

Planning and Licensing

- 3.10 Discussions, facilitated by the councils Project Team, between WRG, the EPCJV and Prudential regarding a perceived encroachment of temporary earthworks into the flood relief channel alongside the Smallmead development were undertaken in January.
- 3.11 Representatives of Prudential (Peter Brett Associates) were invited to witness the removal of the encroaching earthworks and were apparently happy with the results. The Contractor is writing to Prudential to clarify, and hopefully conclude, this matter.
- 3.12 There is no new information in relation to the applications for a Section 73 amendment to the Planning Conditions for Smallmead and Longshot Lane.

BACKGROUND PAPERS

Reports to Joint Waste Disposal Board, 12 December 2007

CONTACTS FOR FURTHER INFORMATION

Mark Moon, Project Director
0118 974 6308
Mark.moon@wokingham.gov.uk

Oliver Burt, Project Manager
0118 9399990
oliver.burt@reading.gov.uk

TO: JOINT WASTE DISPOSAL BOARD
19 MARCH 2008

**JOINT WASTE DISPOSAL BOARD – JOINT MUNICIPAL WASTE MANAGEMENT
STRATEGY
(Report by the Project Director)**

1. INTRODUCTION

- 1.1 The purpose of this report is to inform the Joint Waste Disposal Board of progress in the development of a Joint Municipal Waste Management Strategy for the re3 councils.

2. RECOMMENDATION

- 2.1 **That the current version of the Joint Municipal Waste Management Strategy including the Action Plan be endorsed and recommended to the individual Councils for formal adoption.**

3. SUPPORTING INFORMATION

Background

- 3.1 As a key part of their strategic planning processes, the Government expects all local authorities to produce or contribute to a Municipal Waste Management Strategy (MWMS).
- 3.2 The draft Joint Municipal Waste Management Strategy (JMWMS) for the re3 councils has previously been sent to Members. The Waste Strategy Action Plan is appended to this report.
- 3.3 A public consultation on the draft JMWMS was undertaken via the council websites of the re3 councils during August and September. Members at each of the councils were also invited to comment.
- 3.4 The JMWMS is presented to the JWDB for approval and endorsement. Once it has been endorsed it should be presented to each of the councils for formal adoption.
- 3.5 The JMWMS has been produced with the input of consultants (Enviros) following the successful bid for funding from DEFRA by Janet Dowlman

Content of Municipal Waste Management Strategy

- 3.6 The JMWMS for the re3 councils has been produced against a more fortunate background than many such documents at other councils. This is the case because, via the work on our joint waste PFI, we have already undertaken much of the strategic planning, and subsequent procurement, that it is envisaged will follow on from the development of a MWMS.

- 3.7 Far from sitting on our laurels, however, the intention of the document is, having first satisfied the basic requirements of a MWMS, to plot a course for the re3 councils to achieve statutory targets and the financial and environmental objectives of the PFI contract.
- 3.8 The JMWMS has to be both a working document for the councils and a public document for residents and stakeholders. With this dual role in mind, the JMWMS starts by explaining both what it is and what the re3 partnership is.
- 3.9 The JMWMS describes the environmental, legislative and financial influences on waste, some demographic information, current levels of performance in the three councils and the role of the PFI contract. Collectively these sections describe the context for the Action Plan.
- 3.10 The three councils undertook a consultation exercise in August and September of 2007. Unfortunately there were very few responses (7 in total) although Officers have taken the comments into consideration in subsequently revising the document.
- 3.11 One reason for the low response rate could be the size of the document. By necessity (and requirement from DEFRA) it's quite a long document and it's size may have been a disincentive to potential respondents.
- 3.12 The councils have taken this on board in developing the Action Plan (one, required, section of the JMWMS) as a stand alone appendix to the entire document which we intend to review and consult on annually.
- 3.13 The Waste Strategy and Action Plan have not yet been put in a designed format. Officers felt that it was better to ensure the tone and written content were appropriate and approved prior to addressing the aesthetics of the strategy document. Once it has finally been adopted, the councils could have a small number of copies produced in a format appropriate to represent the partnership and bound.

Action Plan

- 3.14 The Action Plan has been written to reflect the direction given to local authorities in the Government's Waste Strategy 2007 (which replaces the previous guidance – Waste Strategy 2000). New areas of specific focus are on subjects such as Climate Change, supporting businesses and the voluntary sector and partnerships.
- 3.15 The Action Plan is the section of the strategy in which the councils' objectives are identified and the steps we intend to take to achieve them are explained.
- 3.16 As stated above (at paragraph 3.11), Officers intend to review and consult on the Action Plan on an annual basis. Part of this process will be a report back to the Joint Waste Disposal Board on progress.

BACKGROUND PAPERS

Reports to Joint Waste Disposal Board, 5 September 2007

CONTACTS FOR FURTHER INFORMATION

Mark Moon, Project Director
0118 974 6308
Mark.moon@wokingham.gov.uk

Oliver Burt, Project Manager
0118 9399990
oliver.burt@reading.gov.uk

**BRACKNELL FOREST BC, READING
BC AND WOKINGHAM BC**
RE3 JOINT MUNICIPAL WASTE MANAGEMENT STRATEGY
(2008-2013)



Publication title re3 Joint Waste Partnership Strategy
CAN DE0110115
Volume number Volume 1 of 1
Version Version 12
Date MARCH 2008
File Reference

Prepared under the management of:

Prepared under the individual project management of Sara Craze and Tom Raffield, within the overall Defra Direct Consultancy Support project direction and management of Jonathan Davies and Chris Carter. Additional input from the following Council Officers: Janet Dowlman (BFBC), Pete Thompson (RBC), Graham Hunt (WBC), Peter Baveystock (WBC), Ella Clarke (re3 Ltd), Laura Smith (re3 Ltd), Clare Ayling (re3 Principle Finance Officer).

Directed, edited, reviewed and approved by:

Chris Carter (Project Director Enviros)

Oliver Burt (re3 Project Manager), and Janet Dowlman (BFBC).

Defra Client Address: Defra Waste Implementation Programme
Local Authority Support Unit
5/B2, Ashdown House
123 Victoria Street
London
SW1E 6DE

for
Bracknell Forest, Reading and Wokingham Councils (re3)

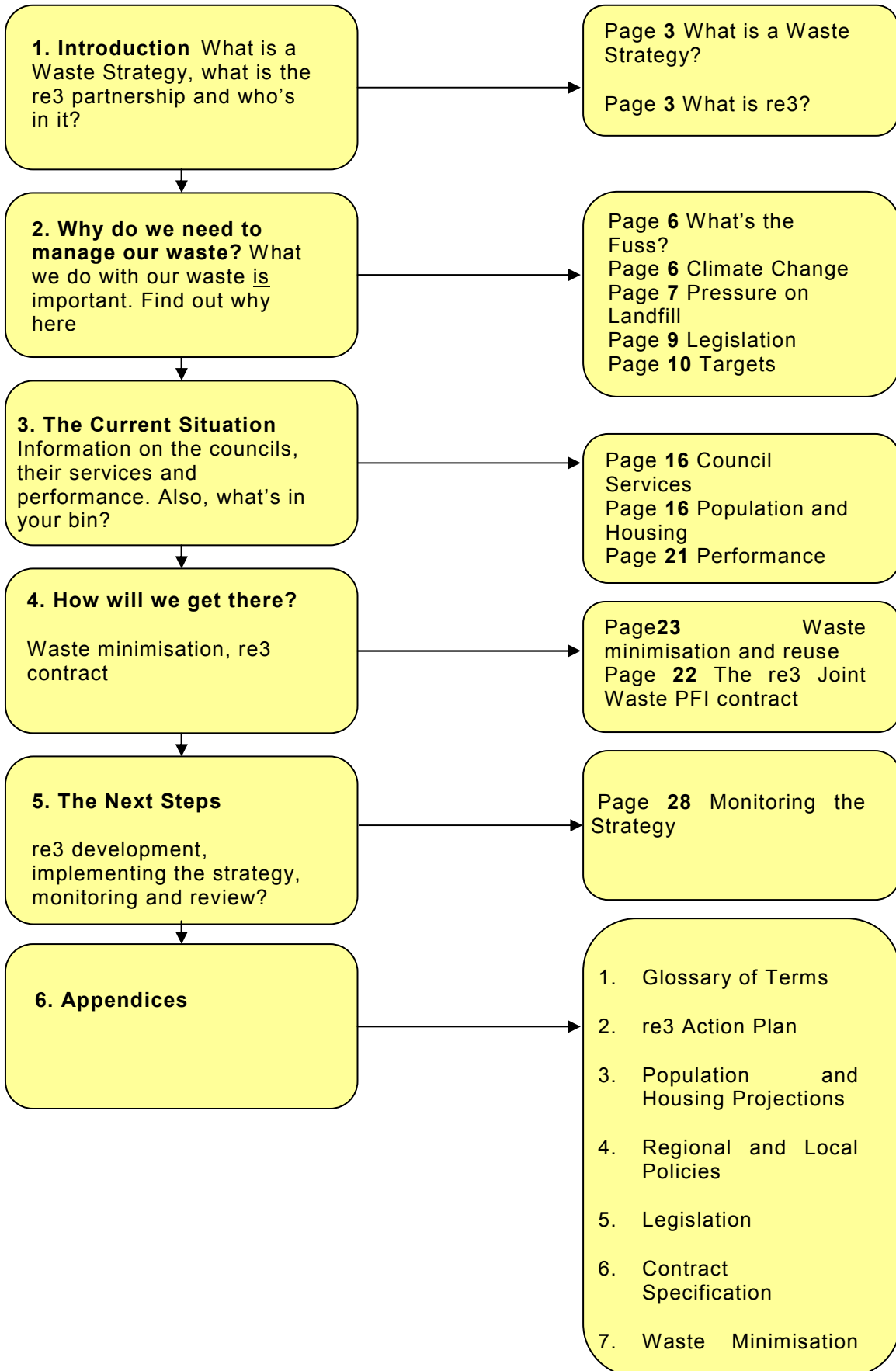
Janet Dowlman, Bracknell Forest

Enviros Contact Details: Enviro Consulting Ltd
20-23 Greville Street
London
EC1N 8SS

Chris Carter, Defra DCS Project Manager

Tel 0207 421 6351
Fax 0207 430 2210
Email chris.carter@enviros.com
Web www.enviros.com
An Alfred McAlpine plc company

INDEX



FIGURES

- Figure 1 The re3 councils
- Figure 2 Combined tonnages of BMW to landfill and the gap between LATS allocations and predicted BMW arisings in Re3 if nothing is done
- Figure 3 Average residual waste composition for each of the three districts
- Figure 4 Artist's impression of the finished Waste Management Park at Smallmead, Reading.
- Figure 5 View of the proposed site entrance, bulk bays and MRF building at Longshot Lane
- Figure 6 View of the proposed offices, visitor centre and transfer station building at Longshot Lane
- Figure 7 The Lakeside Energy from Waste Facility
- Figure 8 LATS targets and BMW that WRG will send to landfill

1. INTRODUCTION

1.1 What is a Waste Strategy?

This document is the Waste Strategy for Bracknell Forest Borough Council, Reading Borough Council and Wokingham Borough Council. The three councils have formed the waste partnership 're3' and are working together to manage waste, principally from households, generated within the three councils.

The purpose of this document is to provide a strategic framework within which the councils, in partnership with local people, will take responsibility for the waste that they produce. It has been developed in line with Defra Guidance on Municipal Waste Management Strategies and Good Practice published in 2005.

This document aims to:

- ◆ Explain the local and national factors that affect how the councils approach waste management;
- ◆ Describe what the councils plan to do to engage residents in the process of improving the management of waste; and
- ◆ Describe how the councils will seek to address some of the new challenges contained in Waste Strategy 2007.

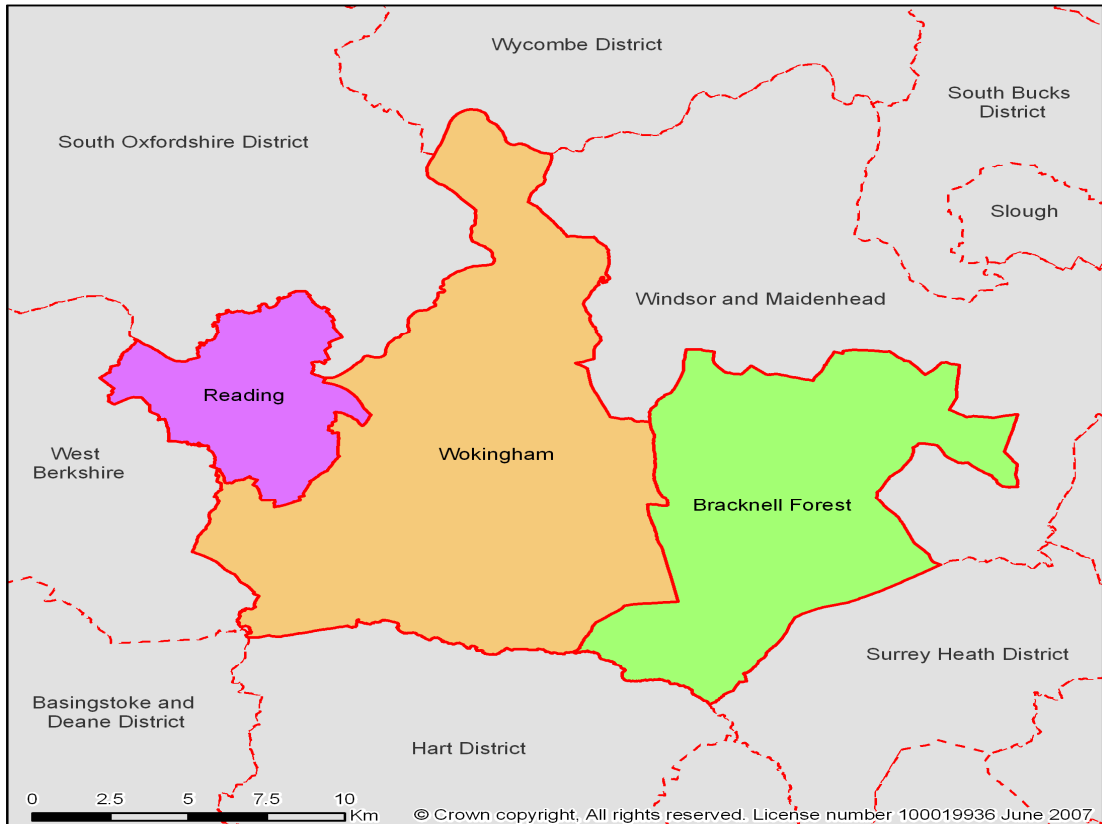
As it says in the final bullet-point above, this document describes how the re3 councils intend to respond to the agenda set by Waste Strategy 2007, the Government's vision for sustainable waste management. Since the publication of Waste Strategy 2000 (the previous strategy statement from the Government), the level of public awareness about the environment, and the impact of waste management within it, has increased.

1.2 What is re3?

re3 is the name given to the partnership between Bracknell Forest, Reading and Wokingham Borough Councils.

Figure 1 shows the location of the members of re3. The Council's area is made up of 33,000 hectares and has a population of about 410,000 people living in over 166,000 households.

Figure 1 The re3 councils



In 1998 Berkshire County Council was disaggregated under local government re-organisation and the Districts and Borough's of Berkshire became Unitary Authorities (UAs). That change is significant because Bracknell Forest, Reading and Wokingham councils' waste responsibilities widened to include the disposal of household waste as well as collection. Previously, disposal of waste and the provision of Civic Amenity Sites were the responsibility of Berkshire County Council.

The collection of waste can be operationally difficult and complex, but district and borough councils have years of experience of managing these key services. The new responsibility for disposal of waste, inherited in 1998, presented serious challenges to the Berkshire authorities which had no previous experience of dealing with it. The County Council had, however, negotiated contracts for the landfilling of waste, which ran until 2007. Whilst it was accepted that landfill was the least sustainable option, replacement facilities and the complementary changes to collection arrangements could not be provided quickly. The challenge to the re3 councils was to procure a long-term, more sustainable solution before the old County Council contracts expired and to minimise the risk that there would be no disposal routes for their residents' waste.

In 1999 the re3 councils formally agreed to work together in developing an Outline Business Case (OBC) for the new facilities they needed. By 2002 the three councils had an approved OBC and had been successful in applying for Private Finance Initiative (PFI) funding from the Government.

PFI is a form of Public Private Partnership (PPP) in which the public sector contracts out a service and the capital element of that service (e.g. facilities). The

capital element is repaid via the cost of the service but the Government also supports the public sector with PFI credits (in the case of the re3 councils this amounted to £37m). The public sector retains a distinct role in the provision of the service, distinguishing PFI from the privatisation of services, but passes some of the risk to their private sector partner.

Following the successful application by the re3 councils for PFI funding, they embarked on a procurement exercise. The waste management industry was invited to propose solutions that were both suitable to the locality and capable of managing the waste produced by residents in the three councils over a 25 year period.

In 2005, Waste Recycling Group (WRG) was appointed by the re3 councils as preferred bidder. A period of intense, detailed negotiations then followed and in October 2006 the re3 councils signed a 25 year contract with WRG – making them the fourth member of the partnership.

As our partners, WRG are already developing new waste management infrastructure in Reading and Bracknell and will manage waste from the three councils throughout the life of the contract.

1.3 Background and Context

As a result of the work of councils, their partners and increased media coverage, the general public are far more aware of 'waste issues' than they were at the turn of the century. The impact of the media is a key component because it is so powerful in shaping opinions. In the years since Waste Strategy 2000, we've experienced fridge-mountains, hazardous waste in our sheds, a deluge of Waste Electronic and Electrical Equipment (WEEE) and a large number of councils have adopted alternate weekly collections. Each of these subjects has been afforded coverage in the national media equivalent to millions of pounds in advertising costs. Some of the coverage has been imbalanced and unhelpful, which is regrettable, but it has all contributed to giving waste management a greater profile. At the same time as the profile of waste management has been raised so has the amount of funding in waste, both from Central and Local Government. With greater funding we have seen a quadrupling in recycling rates across the UK.

Through it all, the commitment of the majority of residents to separate their waste and adapt to new services has been critical. Maintaining that commitment and harnessing it in new areas is the real challenge at the heart of this Joint Waste Strategy for Bracknell Forest, Reading and Wokingham Borough Councils.

1.4 How has the joint waste strategy been developed?

This strategy has been developed between the re3 partners building upon the original WS 2000. It was subsequently updated in line with WS 2007 which was published after the first draft version of the JWS document. It has been developed in line with Defra Guidance on Municipal Waste Management Strategies and Good Practice published in 2005.

A project steering group was established to guide and comment on the formulation of the strategy. During the autumn of 2006 consultation with key stakeholders across the 3 authorities was undertaken. Following the consultation a workshop was organised with appropriate stakeholders from each authority, and representatives from the waste PFI and individual collection contractors to finalise the objectives and formulate an action plan based on WS 2007 and the latest waste management developments and best practice.

2. WHY DO WE NEED TO MANAGE OUR WASTE?

2.1 What's The Fuss?

Why is there all this fuss about waste? In the past it seemed much simpler - you just put your rubbish in the bin and the 'dustman' took it away. But it's never really been that straightforward.

Looking back at the history of waste reveals that we have almost certainly never been as wasteful as we are now. 4000 years ago the Chinese were composting waste and in Europe there were systems in place to recover scrap bronze. The city-state of Athens opened what we would now call a landfill site 2,500 years ago, decreeing that waste should be taken at least one mile beyond the city gates. Much later, in 1874, perhaps the first energy from waste plant, called a destructor, was opened in Nottingham. A year later in 1875, the Public Health Act gave responsibility to local authorities to arrange removal of waste. The Act also required residents to store waste in a "movable receptacle", which is the most likely origin of what many people still know of as a dustbin.

So waste has always been managed in some way. There were even times when public waste caused a more immediate and local problem. The difference now and in the future is that there is an increasingly obvious link between consumption of resources, the resulting waste, and its effect upon the environment.

When resources were less accessible, people were less wasteful. In the past people were less able to exploit the planet's natural resources and in many cases they were more likely to conserve the items they used or consumed. In recent decades we have lived somewhat insulated from concerns about resources because good accessibility has made resources seem plentiful. We have also largely 'externalised' the effects of depleting these resources and the pollution caused.

For the time being, resources may continue to remain accessible but our rate of consumption, for example in Europe and the US, is unsustainable. With the emergence of new, massive economies such as China and India, not only are resources gradually diminishing but 'the West' cannot take for granted that it will be able access them at the same rate or cost that it currently does.

On a less global and more local level, we can't keep landfilling the products we consume. Not only is space for landfill running out in the UK but legislation is either prohibiting it or making it too costly. Alternatives to landfill are available or being developed but the real key to being sustainable is for each of us to reduce the amount of waste we each produce.

We need to control and manage our waste. The sections below look in more detail at the reasons why.

2.2 Climate Change

Climate change is becoming an increasingly important issue in everything we do, including the management of waste.

Everyday waste contains readily biodegradable organic matter such as kitchen waste, garden waste and paper. When these wastes break down in landfill they give off methane gas. Methane is one of the greenhouse gasses which are contributing to the effects of climate change. Here are some facts from DEFRA about the link between our waste and climate change:

- ◆ Whilst CO₂ (carbon dioxide) is the most prevalent greenhouse gas, methane is 23 times more damaging to the atmosphere than CO₂;
- ◆ Methane emissions from biodegradable waste in landfill account for 40% of all UK methane emissions and 3% of total UK greenhouse gas emissions; and
- ◆ On the other hand, current UK recycling of waste materials is estimated to save more than 18 million tonnes of another greenhouse gas, CO₂, through avoided primary material production. That's equivalent to the annual CO₂ output of 5 million cars.

This last fact is important because although it's a complex thing to assess, recycling is often less energy intensive than making products from virgin materials. In the case of aluminium, for example, recycling uses 95% less energy than is used in making the same product from aluminium ore. Energy consumption is a major contributor to climate change and recycling may be one significant way of reducing it.

The way waste is collected also has an impact on climate change. Vehicles are a major source of CO₂ emissions and so reasonably recent developments like kerbside recycling enable councils to greatly reduce the number of journeys that would previously have been needed to recover the same amount of recyclable waste from residents via bring banks.

Councils are committed to helping reduce their impact, and that of residents, on climate change. Many have made a commitment via signing The Nottingham Declaration. To date almost 200 councils are signatories, each committing to working locally towards national climate change schemes, meeting the Kyoto protocol and national targets for carbon dioxide reduction.

Bracknell Forest and Reading have signed up to the Nottingham Declaration, acknowledging the increasing impact of climate change on the local community. Wokingham are proposing to adopt the declaration in the near future. The Declaration commits the Councils, with their partners and communities, to develop plans to address the causes and impacts of climate change according to local priorities.

There are many ways that, as individuals and households, we can help to reduce our contribution to climate change. What we do with our waste is one of them.

The partners of re3 are committed to the protection of the environment and fighting climate change and will continue to review ways in which these issues can be tackled.

2.3 Pressure on landfill

Landfill, as a method of waste disposal, has been under pressure for some time. Whilst there has been an historic reliance on landfill in the UK there is an increasing scarcity of void space in this country and this has increased costs.

An increasing body of legislation aimed at reducing landfill for environmental reasons has also pushed up the price of burying waste. The EU Landfill Directive is the key piece of landfill legislation. It seeks to reduce the environmental impact of landfilling by diverting BMW (Biodegradable Municipal Waste) from landfill. It also sets a uniform standard for all landfill sites in the EU. The Directive states what wastes can and cannot be landfilled and which wastes require pre-treatment prior to disposal at a landfill site. EU member states that fail to comply with the legislation may face substantial fines.

The most important aspect of the Directive for re3 is the requirement to reduce BMW waste to landfill. BMW makes up a significant proportion of household waste and includes green waste from the garden and kitchen wastes.

Figure 2 shows how LATS targets diverge from the modelled BMW to landfill in a scenario where the councils 'do nothing'.

By the 2019/20 target year the fines for re3 could be as high as £14.5 million if nothing is done to divert the BMW from landfill.

Figure 2 Combined tonnages of BMW to landfill and the gap between LATS allocations and predicted BMW arisings in re3 if nothing is done

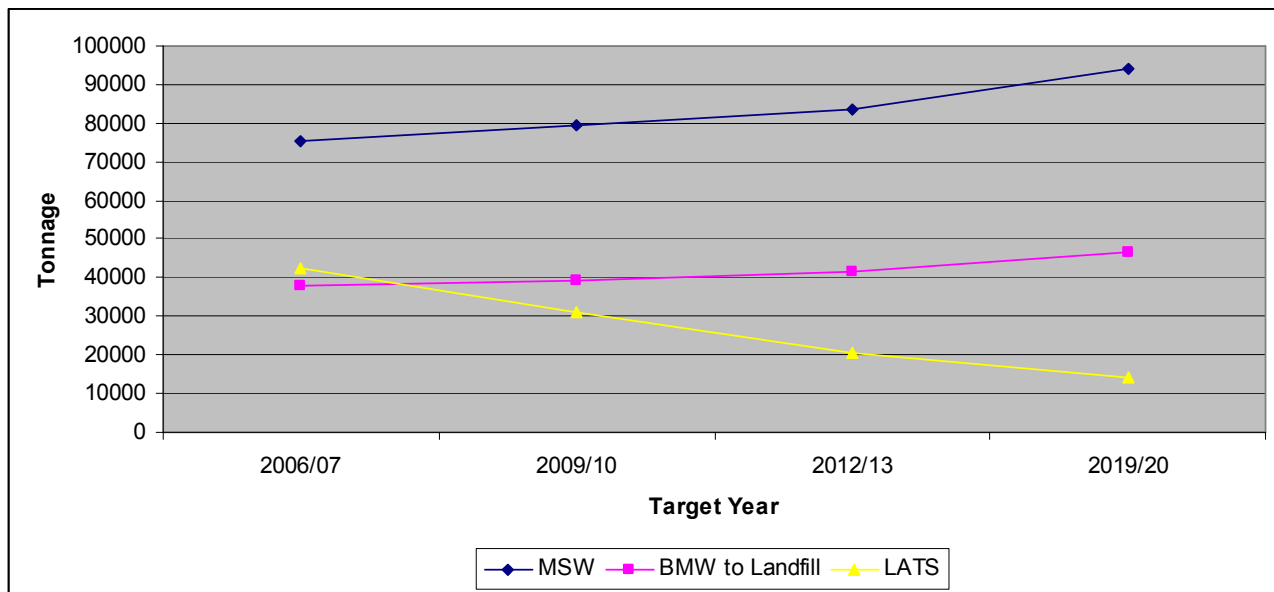


Figure 2 shows an increasing gap, in a 'do nothing' scenario, between the predicted biodegradable waste arising in the re3 area and the maximum allowances imposed on the re3 authorities for that same waste. The implications of this gap are explained below.

In the UK, the Landfill Allowance Trading Scheme (LATS) was implemented within England under the Waste and Emissions Trading Act 2003 (the 'WET Act'). The scheme provides an annually diminishing tonnage allowance for BMW that can be disposed of to landfill. Authorities failing to meet their target will be fined £150 for every tonne they are over their allowance. In order to meet these targets many councils will need to implement alternative collection and treatment practices.

Since 1997 the real cost of landfill has been supplemented by a landfill tax. The tax is designed to deter disposal to landfill and, by increasing year on year, it acts as a driver to increase the financial viability of alternative treatments. The Chancellor's Budget Report for 2007 confirmed the intention to increase the annual landfill tax escalator to £8 per annum (from £3 per annum) from 1st April 2008. From that date, in addition to the cost of collection, transport and disposal, each tonne of municipal waste will have £32 in landfill tax applied. The tax will increase by £8 until 2010 at which point it will be £48 per tonne. This is a similar level to that which applies in several other EU states where landfill taxation has successfully disincentivised the burying of waste and made alternatives viable.

The pressure on, and cost of, landfill is a major factor in the development of recycling collections and the requirement, by councils, for residents to separate their waste at Civic Amenity Sites.

2.4 Legislation

Legislation is the tool by which the EU or UK Government address the regulation of waste activity. Legislation creates a common focus and approach to an issue which may not exist without it. For example, everyone accepts that landfill is not a sustainable method of waste disposal but without the Waste and Emissions Trading Act (see explanation below); it's possible that it would continue being utilised at its present rate until we ran out of landfill capacity.

Not all legislation works exclusively in the area it is intended. The Clean Air Act of 1956 was intended to improve the quality of air which was affected, primarily in built-up areas, by the number of open fires in homes. Aside from successfully clearing the air, it also had the effect of completely changing the composition of household waste from being mainly ash to including waste products such as paper and food that would previously have been burnt in the home. As a piece of legislation designed to address air quality it also had an impact on the course of waste management in this country.

The modern starting point for any discussion on waste legislation is the Environmental Protection Act (1990). It sets out the foundations of the way that waste is managed in the UK.

It's followed by the Duty of Care Regulations (1991 and 2003) which established the duty of producers of waste to ensure that it is managed in a responsible way. The 2003 amendment extends the Duty to household waste.

The Landfill Tax Regulations 1996 established the Landfill Tax levy on the disposal of waste by landfill. This is significant because it played (and continues to play) a major role in making landfill less affordable as a means of waste disposal. This, in turn helped to focus attention and spending on alternative, and more sustainable, methods of waste management.

The Waste and Emissions Trading (WET) Act (2003) is the legislation adopted in the UK to address the EU Landfill Directive. The WET Act establishes an annually diminishing maximum amount of landfill for all Waste Disposal Authorities – an allowance. It also established the Landfill Allowance Trading Scheme (LATS) which is designed to assist the UK to collectively meet the targets and demands of the EU Landfill Directive. The LATS envisages that some councils will be more successful in diverting waste from landfill than others and provides a mechanism for those councils who landfill less than their allowance to trade their surplus permits with councils who have landfilled more than their allowance.

The EU Waste Electrical and Electronic Equipment (WEEE) Directive was passed in 2003 but did not become fully 'live' until July 2007. The WEEE Directive places specific requirements on the producers of electrical and electronic appliances to recover, for reprocessing or recycling, the appliances they make available for sale. Because the WEEE Directive is a producer responsibility style piece of legislation, it means that the costs arising from it are borne by the consumer rather than the general taxpayer.

A more comprehensive and detailed look at the legislation governing waste management can be found at Appendix 5.

2.5 Targets

2.5.1 Government Targets

Legislation describes the ways and means by which waste is managed and it often involves targets. Targets represent a specific level of performance, relative to the individual council or to a common standard, which needs to be achieved. Targets are intended to have the effect of focusing effort and providing a point of comparison.

In the case of the targets emanating from the Landfill Allowance Trading Scheme (LATS), the sum of the targets for each relevant council is equal to the national target for the reduction of Biodegradable Municipal Waste (BMW) for the UK as a whole. In this way, each council is tasked with doing its bit towards achieving the national target.

There are both statutory and non-statutory targets in place aimed at increasing the levels of recycling, composting and recovery of waste. Waste Strategy 2007 updated targets that were originally set by Government in 2000. They are listed below (the 2000 targets, where they differ, appear in brackets):

- ◆ To recycle or compost at least 40% (30%) household waste by 2010
- ◆ To recover value from 53% (45%) of municipal waste by 2010
- ◆ To recycle and compost at least 45% (33%) of household waste by 2015
- ◆ To recover value from 67% of municipal waste by 2015
- ◆ To recycle and compost at least 50% of household waste by 2020
- ◆ To recover value from 75% of municipal waste by 2020

The Landfill Allowance Trading Scheme was launched in April 2005. All local authorities with a responsibility for waste disposal have been allocated an annual allowance, and these set out the tonnage of biodegradable municipal waste (BMW) that the authority is allowed to landfill each year.

The biodegradable component of municipal waste sent to landfill is calculated using a mass balance process. It is deemed that 68% of municipal waste arisings are biodegradable, and the mass balance calculation deducts the amount of BMW diverted from landfill (e.g. recycling and composting) from the authority's total BMW arisings.

Authorities who have unused landfill allowances are able to bank them for use in future years, or can trade the allowances to other authorities to gain income. Likewise, authorities who have exceeded their annual allowance are able to borrow up to 5% of the following year's allowance, except in the year directly preceding a target year. The EU-wide target years are 2010, 2013 and 2020. Banking and borrowing cannot be used to supplement allowances in target years. This is to ensure that the UK allowance is not exceeded in a target year.

Authorities who breach their annual landfill allowance are likely to incur financial penalties of £150 per tonne for every additional tonne of BMW sent to landfill. In addition, they may be penalised equivalent to their share of any financial penalty levied against the UK as a whole for failure to meet the national landfill diversion target.

RE3 JOINT WASTE PARTNERSHIP STRATEGY

Table 1 below shows the allocations of permissible BMW to landfill for the re3 councils. The early years of the LATS scheme are less difficult to achieve. The period between 2010 and 2013 includes two target years and also a marked reduction in the amount of BMW which it is permissible to landfill.

Table 1 Landfill Allowance Trading Scheme annual allowances

Year	Bracknell	Reading	Wokingham
2005/06	39,630	54,127	40,239
2006/07	37,642	50,944	38,500
2007/08	34,991	46,700	36,181
2008/09	31,678	41,395	33,282
Target 2010	27,703	35,028	29,084
2010/11	24,619	31,129	26,486
2011/12	21,535	27,230	23,169
Target 2013	18,452	23,331	19,851
2013/14	17,660	22,330	19,000
2014/15	16,869	21,330	18,148
2015/16	16,077	20,329	17,297
2016/17	15,286	19,328	16,445
2017/18	14,494	18,327	15,594
2018/19	13,703	17,326	14,742
Target 2020	12,911	16,326	13,891

All three Councils currently have a surplus of LATS allowances as detailed in Table 2 below. The disparities in accumulated surpluses between the councils are a result of the level of improvement against their performance in 2001/02. Performance in 2001/02 is the base from which LATS allowances are taken.

Table 2 Current Landfill Allowance Trading Scheme Surpluses

	2005/06 Surplus	2006/07 Surplus	Cumulative Surplus
Bracknell	5,495	8,568	14,063
Reading	10,529	12,343	22,872
Wokingham	4,005	4,696	8,701

Modelling, undertaken as part of the 25 year re3 contract, predicts that the three Councils as a whole will meet their (pooled) LATS targets, with significant surpluses modelled, until 2017.

The predictions are based on expected levels of performance by the councils in terms of collections of recyclables and green waste, modelling of anticipated waste growth and modelled levels of population growth. If any of those factors change markedly, then the point in time at which the councils no longer achieve a surplus may also change. This may require additional services or infrastructure and will affect the urgency and the necessary pace of development.

2.5.2 re3 Contract Targets

The re3 councils identified targets for the contractor to meet in delivering the contract. These were in line with targets outlined in the waste plan for Berkshire, Waste Strategy 2000 (the national strategy at the time) and also took into consideration EU targets such as diversion targets from landfill. The targets to be met by the re3 contractor include:

Meet and exceed the current and future statutory Best Value Performance Indicators for recycling and composting that are set for the councils.

Meet and exceed the national targets for waste diversion outlined in Waste Strategy 2000. Recover value from 45% of municipal waste by 2010/11 and 67% by 2015/16.

Achieve a minimum 40% Best Value recycling/composting rate by 2010/11 thereby meeting Defra's conditions for approval of PFI waste schemes. Furthermore future increases will see levels rise to exceed 50% during the contract period.

Meet and exceed the diversion targets for biodegradable waste from landfill as specified in the Landfill Regulations. By 2010 reduce BMW to landfill to 75% of 1995 level. By 2013 reduce to 50% of 1995 level and by 2020 reduce to 35% of the 1995 level.

The re3 contract targets were based on Waste Strategy 2000 which are different to targets in Waste Strategy 2007 as noted below, however there is a provision in the re3 contract to review performance and targets with regard to changes in national policy and legislation

2.6 Waste Strategy for England 2007

Waste Strategy 2007 is the Government's vision for sustainable waste management. It sets the agenda for councils and also provides a forward look at potential new legislation.

The main objectives of the new strategy are to:

- ◆ Decouple waste growth in all sectors from economic growth and put more emphasis on waste prevention and re-use;
- ◆ Meet and exceed the Landfill Directive diversion targets for biodegradable municipal waste in 2010, 2013 and 2020;
- ◆ Increase diversion from landfill of non-municipal waste and secure better integration for municipal and non-municipal waste;

- ◆ Secure investment in infrastructure needed to divert waste from landfill and for the management of hazardous waste; and
- ◆ Get the most environmental benefit from that investment, through increased recycling of resources and recovery of energy from residual waste using a mix of technologies.

Underneath these high level objectives, Waste Strategy 2007 introduces or amends some notable initiatives.

Waste Strategy 2007 sets higher national targets for councils and their residents than in 2000.

- ◆ Recycling and composting of household waste – at least 40% by 2010, 45% by 2015 and 50% by 2020.
- ◆ Recovery of municipal waste – 53% by 2010, 67% by 2015 and 75% by 2020.

Further targets relating to the reduction of household residual waste (not recycled, re-used or composted) from the levels produced in 2000 have been set:

- ◆ Reduce the level of household residual waste to 29% of 2000 levels by 2010, 35% in 2015 and 45% by 2020.

The Government intends to review progress against the targets for 2015 and 2020 in 2010 and may amend them to be more ambitious.

An increased emphasis is given to Climate Change. The Government intends the overall impact of the strategy to be an annual net reduction in global greenhouse gas emissions from waste management. The strategy estimates that the reduction could be about 9.3 million tonnes of CO² - equivalent to the annual use of 3 million cars.

The reductions will be brought about through more efficient waste management, diversion from landfill and increased recycling.

Disincentives for landfilling are increased and potential incentives for recycling are unveiled. Government consulted on removing the ban on local authorities introducing **household financial incentives for waste reduction and recycling** and has opted to allow a handful of authorities to trial such an initiative with a view to issuing wider powers at a later date if the trials succeed. An example of such a scheme might involve householders receiving payments for recycling their waste, funded by ring-fenced receipts from charges levied upon those householders who choose not to recycle.

Producers, Retailers and Consumers will be targeted. The Government is keen to target each of these key areas to ensure that products are designed with their environmental impact in mind, they are not over packaged and they are readily recyclable and recycled;

Particular materials will be targeted. Paper, food and green waste, plastics and aluminium will be the principle targets because they either offer the greatest scope for capture or because recycling them has a greater impact in environmental terms.

Local and regional governance. Encouraging **local authorities to help local (particularly small) businesses** reduce and recycle their waste with cost savings through more integrated management of different waste streams; and

Encouraging the **Regional Development Agencies**, and other bodies, to work in partnership with local authorities and third sector organisations in coordinating business waste and resource management.

2.7 Joint Waste Strategy Objectives and Targets

The objectives and targets for the re3 Joint Waste Strategy have evolved as a result of local initiatives since the original JWS document was formulated. It has been updated to more closely reflect the National Waste Strategy 2007 and the Climate Change agenda which enables the re3 councils to formulate a more holistic and forward looking action plan for 2008 and beyond. The following objectives, in Table 3 below, encompass all aspects of the community, including businesses, the charity and voluntary sector. They include collection schemes, the re3 waste disposal contract facilities and government legislation, whilst still linking with the waste hierarchy.

Table 3 Joint Waste Strategy Objectives

The Local Community and Businesses	
Objective 1	The re3 councils will build on current participation in, recycling & composting and seek to further raise 'waste awareness' to effect positive behavioural change.
Objective 2	The councils will seek to support local businesses, particularly SME's, in reducing and recycling their waste.
Council Collection Services	
Objective 3	The re3 councils will seek to improve the operational, environmental and performance efficiency of their collection services and maximise the opportunity to recycle and compost as many materials as possible.
Waste Management Facilities	
Objective 4	The re3 councils, in partnership with their PFI Contractor, will strive to ensure continuous improvement in the effectiveness, efficiency and quality of the Contract Facilities
Objective 5	The councils, in partnership with their PFI Contractor, will seek to ensure that Contract Facilities are user friendly, provide excellent customer service and are responsive to users' needs.
Private and Charity Sector	
Objective 6	The councils will develop policies and approaches for managing recyclable and reusable waste in partnership with the 'charity' and voluntary sector where appropriate.
Objective 7	The councils will engage with the Private Sector, particularly those in the retail industry, to deliver improvements in waste minimisation and recycling initiatives.

RE3 JOINT WASTE PARTNERSHIP STRATEGY

Government and Legislation	
Objective 8	The councils will ensure that compliance with new and emerging legislation is achieved.
Objective 9	The councils will strive, in partnership with their PFI Contractor, to exceed all relevant waste related performance targets.
Environmental Commitment	
Objective 10	The re3 councils will work with their contactors and other partners to ensure that sustainability and efficiency is considered, in all aspects of their waste management activities, and that they minimise the carbon footprint of waste operations.

3. THE CURRENT SITUATION

This section seeks to provide a snapshot of factors relating to household waste now. Although it is only a snapshot, the information included below is helpful in both charting the progress of the councils over the last five years and in planning service developments over the next 5 years and beyond.

The relevant tables in this section (e.g. population, waste composition, council services etc) are correct at the time this Strategy is published. The overarching strategy will be reviewed after 5 years. However the Action Plan associated with the strategy document will be reviewed annually and will include progress, service changes and updated performance. This information will also be available on each of the councils' websites.

3.1 Roles and Responsibilities

The re3 councils are individually responsible for the kerbside collection of refuse, recycling and garden waste materials and bulky waste collections in their respective boroughs, via their appointed internal or external collection contractors. This includes delivery of all kerbside materials to the waste transfer stations or composting facilities which are managed by, or sub contracted to, the re3 contractor, WRG.

The collection of materials from bring recycling sites in each borough is the responsibility of the re3 contractor WRG via its sub-contractors as appropriate. Collection from charity banks is the responsibility of the individual charities. The storage, haulage and processing of all municipal waste collected by the councils is the responsibility of the re3 contractor, WRG. A project team manages the re3 contract on behalf of the 3 authorities in liaison with each of the partners.

3.2 Housing and Population

The re3 'Thames / M4 Corridor' area is characterised by dynamic economic growth, recent investment in high-tech/service industries and high employment. Partly as a result of this, the number of people living in the re3 area and the number of houses has grown significantly in recent years. Table 4 shows the current situation (2006) for population and housing for all three of the re3 members and, to show the upward trend, is accompanied by the figures from 2001.

The growth of population for each individual council is higher than the national average growth experienced in the UK since 2001, which is 0.5%¹. Wokingham experienced growth more than double the national average in that time while Reading's population grew by more than six times the UK average. re3 as an area experienced growth of 1.9% between 2001 and 2006 - almost four times higher than the national average. Population and housing projections for all three partners up to 2026 are provided in the appendices. These figures were provided by the Joint Strategic Planning Unit (JSPU) which produced figures for each of the Berkshire unitary authorities.

¹ Office of National Statistics - <http://www.statistics.gov.uk/CCI/nugget.asp?ID=6>

Table 4 Housing and population figures for re3 (Source: JSPU 2007)

Council	Population			Households		
	2001	2006	Growth	2001	2006	Growth
Bracknell Forest	109,650	110,517	0.8%	43,467	45,058	3.7%
Reading	144,684	149,671	3.4%	57,948	61,863	6.8%
Wokingham	150,334	152,210	1.2%	57,395	59,573	3.8%
Total	404,668	412,398	1.9%	158,810	166,494	4.8%

A combination of higher than average population growth and a national increase in the numbers of smaller households, has implications for waste generation. As numbers of people and households increase, so will the average waste arisings in each area and for re3 as a whole. Furthermore, additional housing being constructed in the area will have implications for collection rounds, bin provision and costs etc.

The information in Table 4 above is based on 2001 census and recent demographic trends may mean that population and housing may differ from projections given by the JSPU. Current trends in population indicate that these figures may differ significantly.

3.3 Current Waste Tonnages & Composition

The predicted, combined total municipal waste tonnage for the re3 councils, in the 2008/09 year, is 220,000 tonnes.

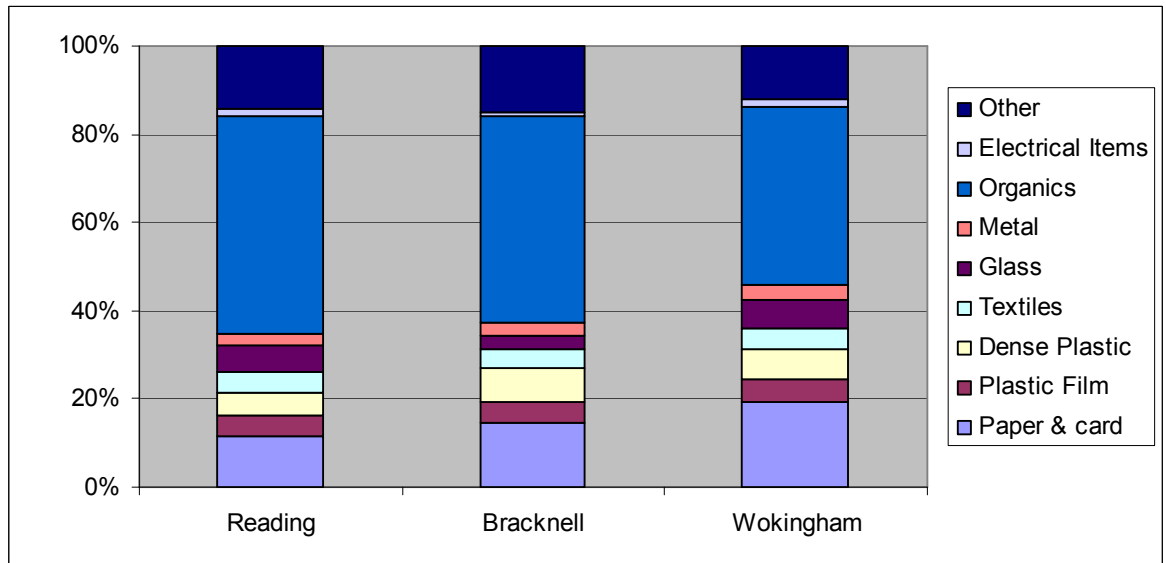
3.3.1 Waste Composition

It is true that the composition of our waste is substantially influenced by our purchasing habits. As a greater range of waste materials is collected separately for recycling, the composition of the remaining waste, intended for disposal, changes too. Ten years ago far more paper and card would have been present in our waste for disposal. Nowadays, we are capturing a great deal of it in recycling collections.

Types and quantities of household waste are often related to socio-economic group, spending power and less straight-forward factors such as the relative transience in a community. The presence of children within a household and their ages may also have a direct effect on quantities and composition of waste and on the levels of recycling and set out rates in kerbside schemes.

In understanding the composition of the waste still destined for disposal we can plan further services and assess where the greatest gains can be made. A waste compositional analysis was undertaken in June 2007 within each of the re3 council areas. Figure 3 below, uses the results of the analysis to show the average percentage composition of residual waste across all the Acorn categories for Reading, Bracknell and Wokingham.

Figure 3 Average residual waste composition for each of the three districts



From Figure 3 above it is clear that there is still a considerable amount of waste in residual bins that could be recycled. Putrescible waste accounts for a large percentage of the composition for all three districts. A significant amount of waste material, for which the councils already offer collection services (e.g. garden waste and paper) continues to be found in residual waste. This indicates that further work on awareness, and maximising the efficiency of collections, is required.

There is a significant proportion of food waste in residual waste bins. According to WRAP around a third of all the food we buy ends up being thrown away and most of this could have been eaten – it’s not just peelings, cores and bones. 90% of us just don’t realise how much good food we throw out, yet in the UK we throw away 6.7 million tonnes of food each year. It’s not just an issue of good food going to waste or that this costs us as consumers a significant amount of money, but that there are serious environmental implications. The amount of food we throw away is a major contributor to the production of greenhouse gases in the UK.

Another key issue with the composition of waste in the re3 councils areas is that a large percentage is packaging. Packaging is continuing to grow as a main focus for waste reduction and minimisation initiatives in many areas of the UK. Waste Strategy 2007 highlights the producer responsibility regulations as an area for amendment to achieve packaging minimisation. Packaging is often necessary, for example in minimising product damage in transit and to ensure that fresh products reach the consumer. A number of retailers have agreed to work to reduce packaging and have signed an agreement called the Courtauld Commitment.

The Courtauld Commitment is an agreement between WRAP and major grocery organisations which will lead to new packaging solutions and technologies so that less rubbish ends up in the household bin. The agreement is a powerful vehicle for change and will result in real reductions in packaging and food waste.

RE3 JOINT WASTE PARTNERSHIP STRATEGY

3.4 Council Services

Each of the re3 councils offers a slightly different collection service to residents, as detailed in the Tables below. Bracknell Forest and Reading Borough Councils offer alternate weekly collections of residual waste and recycling and garden waste. Wokingham Borough Council offers weekly collections of residual waste and fortnightly collection of recyclables and garden waste. Despite the subtle differences, each offers kerbside collections of waste for disposal, items for recycling and a green waste collection for composting.

44

Bracknell Forest Borough Council

The Council's refuse collection contract is with SITA and is due to expire in 2011.

The recycling services provided to residents by the council are part of the council's Alternate Weekly Collection service, which picks up recyclables on one week and collects residual wastes the next. Green waste is collected at the same time as other recycling with an initial one-off charge.

Waste Material	Container	Materials Collected
Residual	Green Wheelie Bin	<ul style="list-style-type: none"> General Non Recyclable Waste
Dry Recycling	Blue Wheelie Bin	<ul style="list-style-type: none"> Plastic Bottles Food and drinks cans Empty aerosols
	Green Kerbside Boxes	<ul style="list-style-type: none"> Newspapers & Magazines Telephone directories and catalogues Cardboard and other Paper
Garden Waste	Brown Wheelie Bin / Biodegradable Paper Bag	<ul style="list-style-type: none"> Green waste

Reading Borough Council

Reading Borough Council has provided an in-house refuse collection service since it was formed.

Reading operates an Alternate Weekly Collection system and collects residual waste from each household every two weeks while recyclables are collected on the alternate week. Green waste is collected by the council with an initial one-off charge.

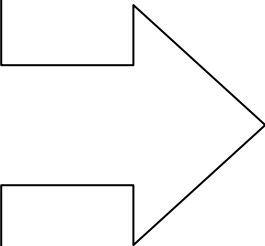
Waste Material	Container	Materials Collected
Residual	Grey Wheelie Bin	<ul style="list-style-type: none"> General Non Recyclable Waste
Dry Recycling	Red Wheelie Bin	<ul style="list-style-type: none"> Newspapers & magazines Books, telephone directories & catalogues Cardboard & other paper Food & drinks cans Plastic bottles
Garden Waste	Green Wheelie Bin / Green Bag	<ul style="list-style-type: none"> Green waste

RE3 JOINT WASTE PARTNERSHIP STRATEGY

Wokingham Borough Council

The Council's refuse collection contract is with SITA and is due to expire on September 30th 2009 but there is an option for an extension of up to 3 years

A weekly residual waste collection is in operation in Wokingham with fortnightly collection of recyclables. Two black boxes are provided for recyclable materials and sacks can be purchased for green waste collection. The kerbside collection service accepts mixed paper and card, green wastes, and plastic bottles.



Waste Material	Container	Materials Collected
Residual	Dustbin / Sack	<ul style="list-style-type: none"> • General Non Recyclable Waste
Dry Recycling	Black Boxes	<ul style="list-style-type: none"> • Plastic bottles • Steel and Aluminium drinks and food cans • Newspaper and magazines • Cardboard packaging •
Garden Waste	Reusable Bag	<ul style="list-style-type: none"> • Green waste

3.4.1 Other collection services

All of the re3 councils operate chargeable bulky household collection services for furniture and large electrical items and they all collect clinical waste. Further information about collections offered by the individual councils can be found in the Appendices or on individual council websites.

3.5 Performance

The recycling performance of councils is measured as a percentage of their total household waste arisings.

As such, a council can show how successful it has been at recycling and composting household waste from within its area. The benefit of consistent performance indicators is that over time they show progress and thus reward effort on the part of councils and most importantly their residents – who are, after all, the people who are generating the waste. They also help waste managers to identify areas needing improvement.

The current method of measuring recycling performance is a useful way of comparing the progress being made by councils across the country. However the demographic structure of authorities varies enormously, from urban areas with high rise housing blocks to leafy suburbs, and the relative performance on recycling in a Best Value Performance Indicator league table does not take account of this. Those areas with high population density, lower than average numbers of residents per household, a high number of flats and where English is not the first language tend to recycle less and often create more waste. Some parts of the re3 share these characteristics and the achievement of high recycling rates may require special attention.

Table 5 below shows the recycling performance for the three councils over the last five years. Each has made significant improvements in overall performance (figures for the last 2 months of 2007/8 are estimated).

Table 5 Recycling and Composting Rates

		2003/04	2004/05	2005/06	2006/07	2007/08
Bracknell	Recycling	14.62%	15.99%	18.69%	23.93%	25.50%
	Composting	5.76%	8.05%	9.27%	11.56%	14.52%
Reading	Recycling	14.53%	17.60%	18.30%	21.40%	25.62%
	Composting	3.35%	3.40%	3.30%	4.76%	8.76%
Wokingham	Recycling	18.45%	19.25%	21.90%	22.81%	22.11%
	Composting	7.42%	7.62%	8.40%	11.16%	15.38%

Table 6 below shows the percentage of waste to landfill from the three councils over the last five years. As the improvements in recycling have continued, so has the reduction in waste to landfill.

Table 6 Percentage of waste sent to Landfill

	2003/04	2004/05	2005/06	2006/07	2007/08
Bracknell	79.63%	75.96%	72.04%	64.43%	59.73%
Reading	82.12%	79.02%	77.72%	71.89%	62.74%
Wokingham	74.13%	73.14%	69.27%	65.60%	61.81%

4. HOW WILL WE GET THERE?

4.1 Waste Minimisation and Reuse

Tackling the growth in waste is an essential element of re3's Joint Municipal Waste Management Strategy and a key objective is to work with the local community and businesses to further raise awareness in order to effect positive behavioural change. Two Waste Minimisation Officers are employed by WRG to work with the 3 councils on waste minimisation initiatives. re3 has a Waste Minimisation Plan that sets out the strategy for the promotion of waste minimisation for the next 5 years and this plan will be subject to annual review. The broad aims are shown below:

- ◆ Reduce the amount of waste produced by households
- ◆ Increase awareness of waste issues in the community
- ◆ Encourage behavioural change in accordance with the waste hierarchy
- ◆ Develop an educational programme that ensures each child receives waste education at least once in their school life

4.2 Future Collection Strategies

The re3 partner councils will closely monitor examples of good practice on reuse, recycling and landfill diversion in other councils, both within the UK and Europe. If appropriate for our own councils then further consideration will be given to best practice and the possibility of partnership working. What works for one council may not be appropriate to all or any of the re3 councils. The re3 councils will work together to raise waste awareness in all sectors of the community.

The main thrust of our recycling services, and our approach to promoting recycling behaviour, is through our collection and disposal contract arrangements for the main post-consumer recyclable materials, i.e. paper and card, glass bottles and jars, metal cans and plastic bottles. We will add to these as industries mature.

We recognise however that there are materials outside the contractual arrangements, and will consider applications for recycling or reuse credits where proper auditable claims are made, consistent with such Statutory Guidance as may be applicable.

Furthermore, where there is a demonstrable financial and/or environmental advantage to the councils, we will consider proposals that support our efforts to increase recycling and/or reduce landfill, and if appropriate recognise these by payments consistent with Statutory Guidance, or other agreed arrangements.

The councils will consider appropriate service developments as part of the annual review of the Action Plan and one definite action is to.

- ◆ Maximise the recycling potential of the kerbside collections, CA and bring sites and therefore increase recycling.

4.3 The re3 Joint Waste PFI Contract

The re3 PFI contract has been in existence for little more than a year but already significant investment is being made in infrastructure. Phase 1, completed in January 2008, and included the development of a new Household Waste Recycling

RE3 JOINT WASTE PARTNERSHIP STRATEGY

Centre (HWRC) and transfer station at the Smallmead Site in Reading. Phase 2, commencing early in 2008, involves the development of a Material Reclamation Facility (MRF), offices and an education centre on the same site. Whilst Phase 2 is underway at Smallmead, Longshot Lane in Bracknell will also be redeveloped to improve the facilities available there. All development at the two sites should be complete by Spring 2009.

The current composting facilities at Burghfield and Planners Farm will continue to accept 15,000 tonnes per annum until 2008 when the Burghfield facility closes. Following this, further composting facilities will be provided through WRG's sites and through sub-contracts. In order to ensure that targets continue to be met, a limited quantity of waste (60,000 tonnes per annum) will be sent to the Lakeside Energy from Waste (EfW) plant situated at Colnbrook in Slough. The plant will accept a total of 400,000 tonnes a year of municipal waste generating 32MW of electricity for the national grid. Remaining residual waste from re3 will be disposed of via existing landfill contracts until they expire. At that time WRG will dispose of the waste to their site at Sutton Courtenay.

The pictures below illustrate the facilities included in the re3 contract which are currently being developed.

Figure 4 Artist's impression of the finished Waste Management Park at Smallmead, Reading.

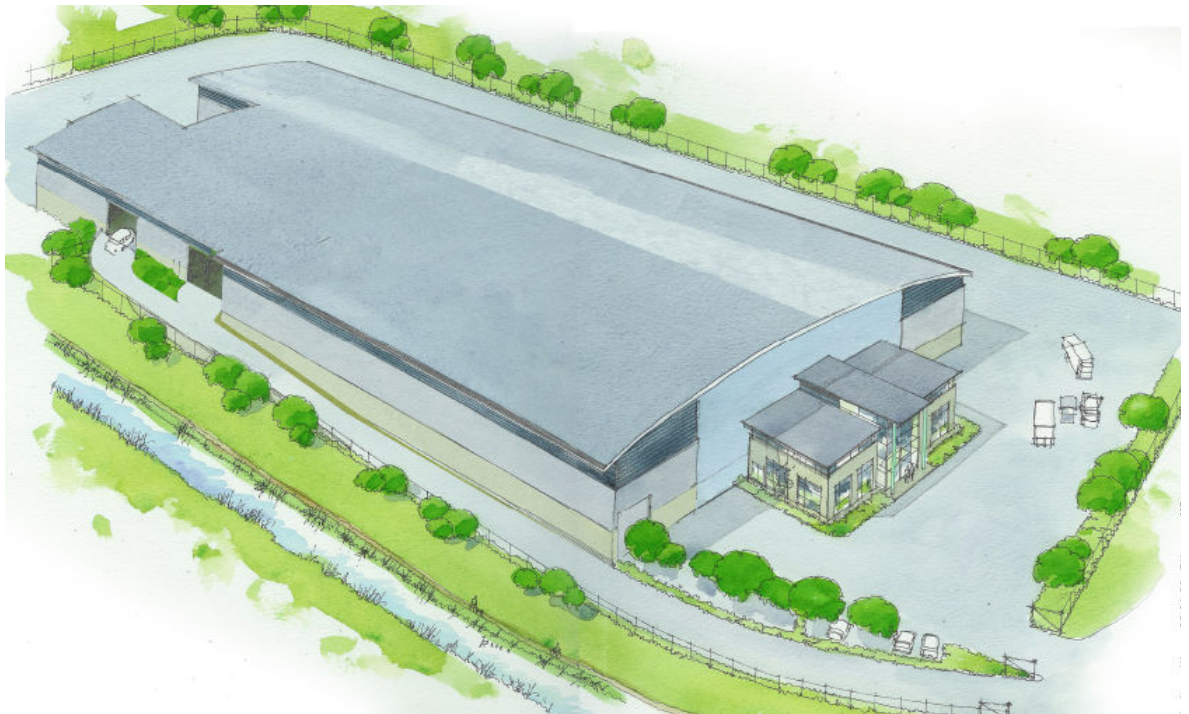


Figure 5 View of the proposed site entrance, bulk bays and MRF building at Longshot Lane

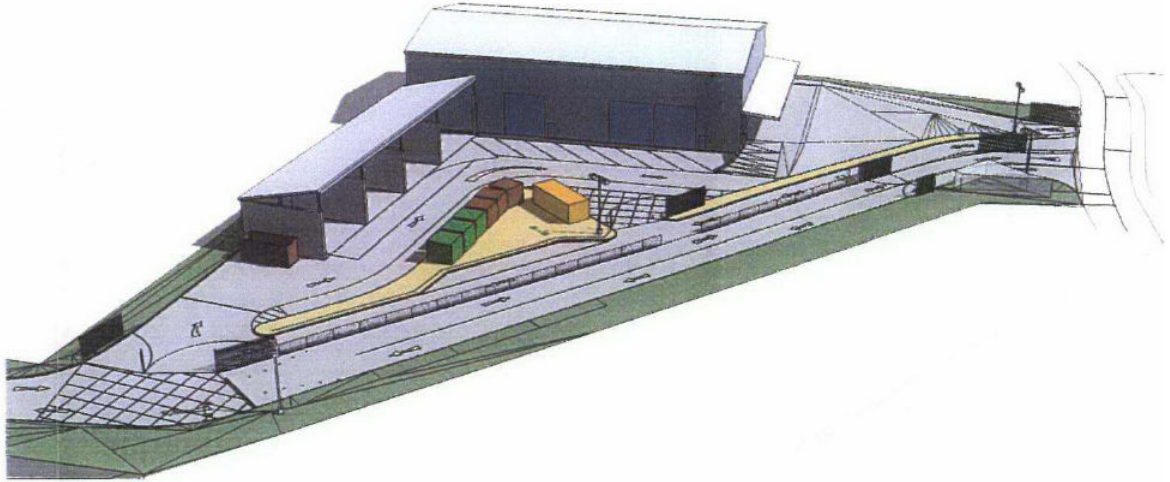


Figure 6 View of the proposed offices, visitor centre and transfer station building at Longshot Lane



Figure 7 The Lakeside Energy from Waste Facility



Source: Viridor Waste Management: <http://www.viridor-waste.co.uk/index.php>

The facilities and services provided by WRG are intended to enable the partners of re3 to achieve high levels of composting and recycling, exceeding the statutory targets where possible.

Recyclate collected in kerbside collections and at CA sites is bulked at the transfer stations located at the Longshot Lane site in Bracknell Forest and Smallmead site in Reading, before onward transport for recovery. The waste contractors, WRG, employ various materials outlets, merchants and associated spot markets to secure the best financial outcomes for the councils.

The flow of materials between the three council areas and the various facilities is quite complicated, however Best Practical Environmental Option and the Proximity Principle have been considered throughout contract negotiations. The re3 councils and WRG are conscious that they need to continue to manage the number of miles travelled.

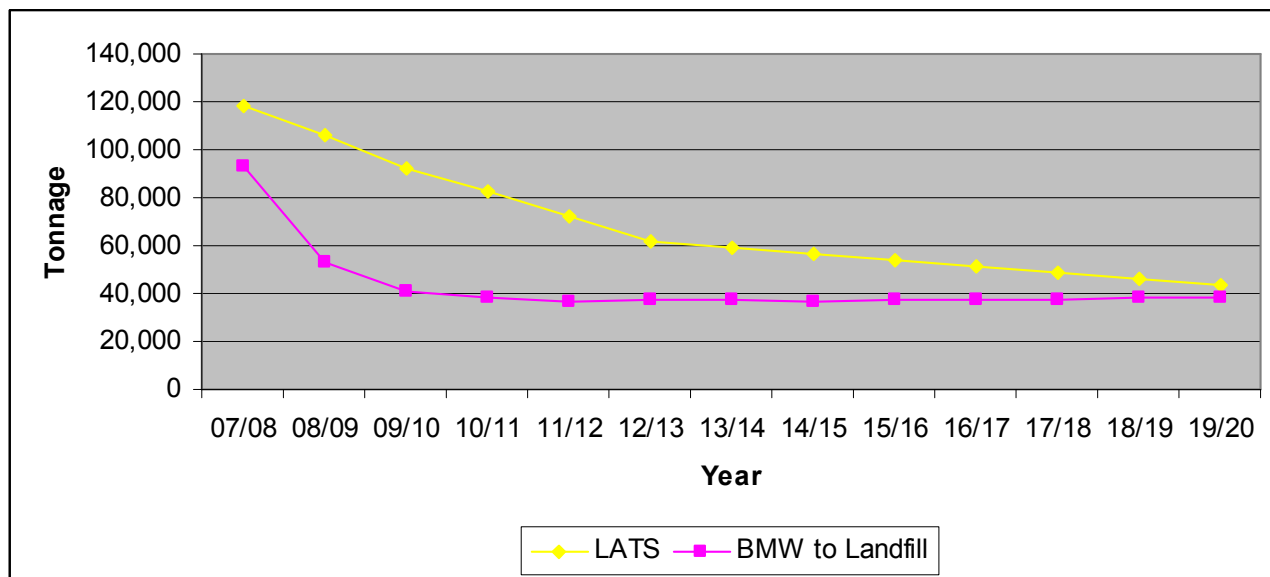
4.3.1 re3 and LATS

The PFI contract awarded to WRG includes sufficient infrastructure to enable the three disposal authorities to not just meet but exceed their LATS targets. Crucially the model shows that re3 will meet its LATS allocations in the target years and therefore not face any financial penalties. The prediction to 2019/20 is shown in the Table 7 and Figure 8 below, indicating that re3 will have allowances to spare that could either be banked or sold to other authorities.

Table 7 LATS targets and WRG predictions for diversion

Year (*target year)	LATS allocation for re3 (tonnes)	BMW to Landfill using WRG (tonnes)	Surplus allocation (tonnes)
2007/08	117,872	93,260	24,612
2008/09	106,355	53,411	52,944
2009/10*	92,535	40,491	52,044
2010/11	82,234	38,356	43,698
2011/12	71,934	36,798	35,136
2012/13*	61,634	37,188	24,446
2013/14	58,990	37,541	21,449
2014/15	56,347	36,750	19,597
2015/16	53,703	37,022	16,681
2016/17	51,059	37,323	13,736
2017/18	48,415	37,659	10,756
2018/19	45,771	38,024	7,747
2019/20*	43,128	38,420	4,708

Figure 8 LATS targets and BMW that WRG will send to landfill



RE3 JOINT WASTE PARTNERSHIP STRATEGY

Achieving the landfill diversion targets depends upon continuing development of, and public participation in, the current kerbside collection services.

Public participation will be critical to success following the completion of the new infrastructure. The contract includes the development of education centres at both Smallmead and Longshot Lane. These facilities will be managed by two Education and Waste Minimisation Officers with support from the council's project management team and the individual councils. The Education and Waste Minimisation Officers will co-ordinate efforts to reduce waste generation and educate the next generation of householders.

The Waste Minimisation Plan is appended to the Strategy. It will be reviewed annually and the appendix updated.

5. THE NEXT STEPS

5.1 Joint working

The successful implementation and delivery of the strategy will require the partner authorities and WRG to keep improving the ways in which they work together, at both an operational and strategic level. There is a clear commitment to working together in partnership under re3. Further work will be undertaken by the partnership to explore and agree options to strengthen this relationship and enhance governance arrangements, particularly where this improves operational structures. Joint working between the councils of re3 may take place in areas that include joint publicity campaigns and procurement (e.g. the joint purchase of containers to achieve economies of scale).

The achievement of the targets adopted in this strategy is dependent on increasing recycling and composting. This means that the interface between how we collect these materials and the provision of sorting and processing facilities is critical. Integrated planning and delivery of waste management services will be essential in the future and will require a joint approach to all elements of the strategy.

5.2 Action Plan

An Action Plan has been agreed by the re3 partners to ensure that the objectives of this Strategy are implemented. The Action Plan will be regularly reviewed and forms Appendix 2 of this strategy.

5.3 Monitoring the strategy

This JWS sets out how re3 plans to manage its waste in a more sustainable manner over the next 25 years. However, the delivery of the strategy will need to be monitored to establish whether key objectives, such as increasing recycling and composting rates, have been met.

The re3 Steering Group (as identified in 1.4) consists of officers and representatives from the contractor who will be responsible for monitoring the delivery of the strategy, using the achievement of items in the Action Plan to measure progress. The strategy will be reviewed on a continual basis, with a formal revision or reassessment every five years in accordance with current guidance.

This Action Plan describes, in broad terms, the initiatives that the councils and their PFI contractor have identified as being important to the improvement and advancement of waste management services within Bracknell Forest, Reading and Wokingham Borough's over the next 5 years. The Actions will be reviewed annually to record progress, re-assess priorities, make additions and ensure relevance.

ACTION PLAN 'PRIORITY' COLUMN

The second column, in the Action Plan below, describes the priority given to each action by the councils. The priorities are described in terms of the order in which they will be addressed. For example, an action which has been identified by the councils as being a high priority is likely to be addressed before one with a low priority. Priorities change, however, and the councils will review these actions on an annual basis.

Key to Priority Column

High Priority: addressed within 2 years = H

Medium Priority: addressed within 4 years = M

Low Priority: addressed within 5 years = L

Re3 JOINT MUNICIPAL WASTE MANAGEMENT STRATEGY (2008 - 2013)

Action	Priority	Link to other Objectives	How will it be done?	How will it be measured?	Responsibility	Status
THE LOCAL COMMUNITY AND BUSINESSES						
OBJECTIVE 1: The re3 councils will build on current participation in recycling and composting and seek to further raise 'waste awareness' to effect positive behavioural change.						
Target new residents with important information on waste services	H	3, 9	Councils seek to involve estate agencies, landlords and other routes e.g. nurseries, schools and clinics	Number of information packs issued	Councils	
Raise overall understanding of residents for the need and requirements of recycling services.	H	3, 9	Promotional activity - delivering information in important places e.g. the home, shops, work, school	Customer feedback	Councils and Contractor	
Targeting non-participants in kerbside recycling and composting services	H	3, 9	Identifying non-participants and addressing the barriers to	Participation rates	Councils	

Improve efficiency of participation in recycling and composting services	H	3, 9	participation. Messages targeted by relevant stakeholder group or by material type (e.g. if capture of plastic is low...)	Waste composition, output statistics from MRF	Councils	
Promote and sustain use of home composters and food digesters	M	9, 10	Assess results of appropriate trials, arrange sale, promotion, and education. Introduce measures to support users	Number issued Feedback from users Waste statistics - reduction in landfill BMW	Councils Contractor	
Increase bring sites in existing areas and new developments for materials not collected at kerbside	M	9, 10	Assess potential sites (and materials) and liaise with PFI Contractor	Increases in number of bring sites and in tonnage collected	Councils/Contractor	
Reduce putrescible waste in residual bins through behaviour change	H	3, 8, 10	Promotion and education, campaigns such as 'Love Food, Hate Waste', real nappy campaigns	Waste composition Reduction in landfill BMW	Councils/Contractor	
Increase number of HWRC/waste/composting sites, including those for single	M	3, 9, 10	Assess local, licensed sites (3 rd Party/ Council)	Increase number of sites, reduction in	Councils Contractor	

materials, to increase accessibility					vehicle movements or miles travelled to sites for residents/council vehicles, reduce carbon footprint	3 rd Parties	
OBJECTIVE 2: The councils will seek to support local businesses, particularly small to medium enterprises(SME's), in reducing their waste							
Scoping exercise to ascertain needs and opportunities for supporting SME's	H	10	Apply for BREW funding, possibly undertake feasibility work	If it is completed or not	Councils		
Encourage and support SME's in recycling more	M	10	Encourage co-operation between SME's, information, web-based resources	Increase in number of SME's recycling	Councils Contractor		
COUNCIL COLLECTION SERVICES							
OBJECTIVE 3: The re3 councils will seek to improve the operational, environmental and performance efficiency of their collection services and maximise the opportunity to recycle and compost as many materials as possible.							
Investigate 'Pay as You Throw' schemes	M	1, 9, 8	Monitor results of trials carried out elsewhere, assess appropriateness for	-	Councils		

Investigate use of incentives in increasing recycling and waste minimisation	M	1, 9, 8	re3 councils Incentivise use of smaller bins or increasing recycling	Number of bins 'slimmed' and overall capture of recycling	Councils	
Investigate the options, cost and necessity for food waste collections	L	1, 9, 10	Availability of processing capacity. Feasibility and analysis of positive impact (including LATS)	Cost benefit analysis	Councils Contractor	
Investigate performance requirement to increase frequency of recycling collections	M	1, 9, 10	Feasibility and cost benefit analysis based on needs of councils in achieving statutory targets	-	Councils	
Encourage residents to reduce side waste and contamination (e.g. green waste in residual, unwanted items in recyclables)	H	1	Education, communications, escalation to enforcement in persistent cases, investigation of best practice, working with collection crews	Reduction in side waste, collection crew records,	Councils	
Investigate feasibility and benefits of shared collection services	M	1, 9, 10	Feasibility and cost benefit analysis,	Report on feasibility	Councils	

between re3 councils									
Develop proposals for increasing efficiency in collection services prior to letting of next contract(s)	M	1, 9, 10,	Investigate best practice and new concepts for round scheduling	Proposals made prior to councils tendering process	Councils				
WASTE MANAGEMENT FACILITIES									
OBJECTIVE 4: The re3 councils, in partnership with their PFI contractor, will strive to ensure continuous improvement in the effectiveness, efficiency and quality of the Contract Facilities.									
Seek to ensure that destination of council waste and recycling is known in accordance with prevailing legislation and best practice	H	8	Information provided on reproprocessors used by councils and PFI contractor	By council checks that information is provided in accordance with PFI contract	Contractor/Councils				
Maximise number of materials that re3 MRF can process	M	1, 3, 8, 9	Feasibility study, impact assessment, negotiation with PFI Contractor	Increase in type and amount of material collected and processed	Councils/Contractor				
Investigate options for alternative waste treatment technologies for that waste which remains being sent to landfill	L	9, 10	Feasibility study and assessment of available processing capacity, negotiations with contractor	Reduction in tonnage to landfill via alternative technologies	Councils/Contractor				
'Dirty' MRF at Longshot Lane HWRC to further increase recycling	H	8, 9, 10	Assessment of PFI contractors	Analysis of proposals and	Contractor				

				proposals for this element	impact on contract and contractual performance	Councils	
Controls at HWRC's on waste inputs	H	1, 10		Assess impact of wastes, cost, best practice elsewhere, develop appropriate limits, approve, negotiate with contractor	Composition of waste at HWRC's, costs	Councils/Contractor	
OBJECTIVE 5: The council, in partnership with their PFI Contractor, will seek to ensure that Contract Facilities are user friendly, provide excellent customer service and are responsive to users needs.							
Residents user satisfaction survey on Household Waste Recycling Centres	H	1		Annual User Satisfaction survey at HWRC's	Results of survey	Contractor Councils	
Council staff user satisfaction survey on Contract Facilities	H	3		Annual user satisfaction survey for council staff using Contract Facilities	Results of survey	Councils Contractor	
Encourage and maintain safe and responsible behaviour by staff using Contract Facilities	H	3		Education, 'crew of the month/year' style awards to best users, self monitoring and reporting systems	No of incidents/accidents	Councils/Contractor	

PRIVATE AND CHARITY SECTORS

OBJECTIVE 6: The councils will develop policies and approaches for managing recyclable and reusable waste in partnership with the 'charity' and voluntary sector where it is appropriate.						
Increasing re-use of bulky items (especially furniture)	H	3, 9	Councils will seek to develop a 'dual booking' system to divert re-usable items to charity/voluntary sector partner(s)	Number of dual bookings Increase in re-use	Councils Contractor	
Working with voluntary and charity sector to explore treatment of items not easily recycled or re-used.	M	1, 9	Discussions with appropriate partners, feasibility and impact assessments	Number of partnership agreements in place	Councils/Contractor	
OBJECTIVE 7: The councils will engage with the private sector, particularly those in the retail industry, to deliver improvements in waste minimisation and recycling performance.						
Encourage local reduction of packaging in waste stream	H	1, 9, 10	Carrier bag reduction areas, working with local retailers (including independent retailers), education and promotion campaigns	Waste analysis Number of carrier bag reduction areas Number of retailers partnered with	Councils Contractor	
Encourage reduction in packaging on a national level	H	1, 9, 10	As a partnership, the councils lobby	-	Councils	

					Gov't. Also via LGA, WRAP, NAWDO, CIWM		Contractor	
GOVERNMENT AND LEGISLATION								
OBJECTIVE 8: The councils will ensure that compliance with new and emerging legislation is achieved and that the implications (e.g. environmental, economic) are managed.								
Implement systems to comply with the new waste National Indicators for 2008/9 and LAA indicators if applicable	H	9		Update statistical reports	Reporting of statistical information	Councils		
Investigate the implication of the forthcoming legislation and take appropriate measures to ensure compliance e.g The Battery directive September 2008	H	9		Measures implemented as appropriate to ensure compliance	Information from Contractor	Councils Contractor		
OBJECTIVE 9: The councils will strive, in partnership with their PFI Contractor, to exceed all relevant waste related performance targets.								
Modelling of councils waste performance to assess performance against statutory and contractual targets	H	1,3,10		Development of existing work on modelling, analysis of performance, proposals of areas for action/improvement	Comparison of actual performance v necessary performance	Councils Contractor		
ENVIRONMENTAL COMMITMENT								

OBJECTIVE 10: The re3 councils will work with their contractors and other partners to ensure that sustainability and efficiency is considered, in all aspects of their waste management activities, and that they minimise the carbon footprint of waste operations.					
Waste from council offices to be recycled and minimised	H		Reducing capacity for residual waste, assessing costs by source, layout of bins in offices, procurement	Overall waste Composition	Councils
Develop methods to assess Carbon efficiency in waste services	M		Investigate available measures, assess efficiency of current services, propose changes where necessary or appropriate	Measures in place	Councils/Contractor

**TO: JOINT WASTE DISPOSAL BOARD
19 MARCH 2008**

SCHEDULE OF MEETINGS (Director of Corporate Services)

1 PURPOSE OF DECISION

- 1.1 To seek approval to a schedule of meetings for the municipal year 2008/09.

2 RECOMMENDATIONS

- 2.1 **That meetings of the Joint Waste Disposal Board be held on the following dates at 6.00pm:**

Wednesday 18 June 2008

Wednesday 10 September 2008 (Annual Meeting)

Wednesday 17 December 2008

Wednesday 18 March 2009

3 REASONS FOR RECOMMENDATIONS

- 3.1 To ensure, as far as possible that meetings are planned, thereby reducing the likelihood of clashes with other meetings of the constituent authorities.

4 ALTERNATIVE OPTIONS CONSIDERED

- 4.1 To choose alternative dates.

5 SUPPORTING INFORMATION

- 5.1 The Constitution stipulates that the Board should meet four times per annum. The following dates are proposed for discussion by the Board:

Wednesday 18 June 2008

Wednesday 10 September 2008 (Annual Meeting)

Wednesday 17 December 2008

Wednesday 18 March 2009

- 5.2 As far as is possible the venues for the meetings will alternate between the three Borough Councils. The next meeting on 18 June 2008 will be at Reading Borough Council.

6 ADVICE RECEIVED FROM STATUTORY AND OTHER OFFICERS

Borough Solicitor

- 6.1 Nothing to add to the report.

Borough Treasurer

6.2 Nothing to add to the report.

Impact Assessment

6.3 There are no implications arising directly from this report.

Strategic Risk Management Issues

6.4 There are no strategic risk management issues arising directly from this report.

7 CONSULTATION

Principal Groups Consulted

7.1 None.

Method of Consultation

7.2 None.

Representations Received

7.3 None.

Background Papers

None.

Contact for further information

Hannah Coman, Corporate Services: 01344 352209
hannah.coman@bracknell-forest.gov.uk

Doc. Ref

Joint Waste Disposal Board - Schedule of Meetings